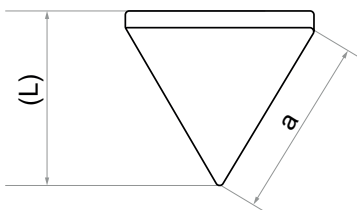
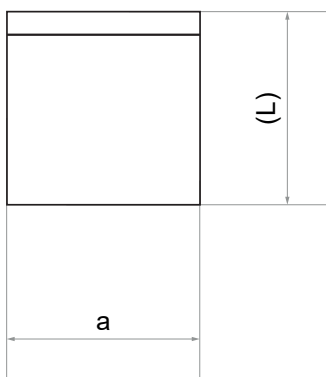


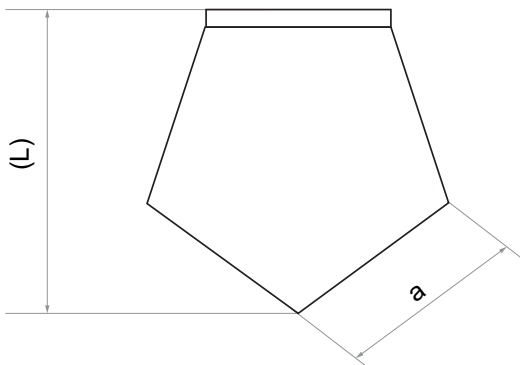
# 1mg-500mg M1;F1;E2



1mg, 10mg, 100mg



2mg, 20mg, 200mg



5mg, 50mg, 500mg

## 1mg - 500mg (M1/F1/E2)

Value	a(mm)	L	
500mg	11,5	17,5	
200mg	10,5	11	
100mg	9	10	
50mg	7	9	
20mg	6	6,5	
10mg	7,5	7	
5mg	3,5	4	
2mg	2,5	2,5	
1mg	2,0	2,5	

(L): mass size with unfolded tab

dimensions in mm